

# Modes Installation and Training

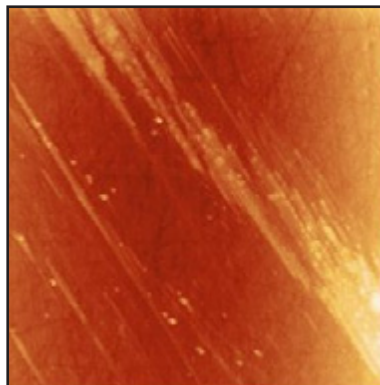
Model ID: MO-1299

AFMWorkshop on-site installation and training packages, IT-2011, IT-2012 or IN-2213, include the installation of the AFM as well as training on the operation of the AFM and on vibrating mode and non-vibrating topography mode. Customers purchasing additional modes packages, and wanting installation and training on those modes, will need to purchase this separate **Modes Installation and Training, MO-1299.**

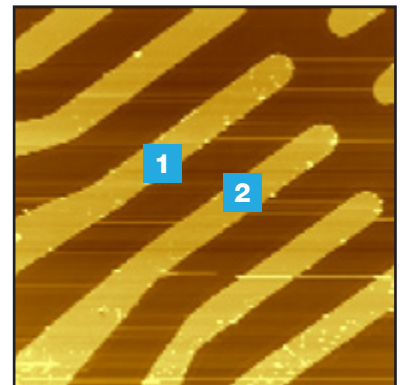
Modes Installation and Training Products Include:

- a. **MFM**  
(Model # MFM-01)
- b. **C-AFM**  
(Model # CA-2011)
- c. **Lithography**  
(Model # LITHO)
- d. **Environmental Cell**  
(Model # LI-2010)
- e. **Dunk and Scan**  
(Model # DS-TTAFM & DS-NPSA)
- f. **Advanced F/D**  
(Model # ADV-FD)

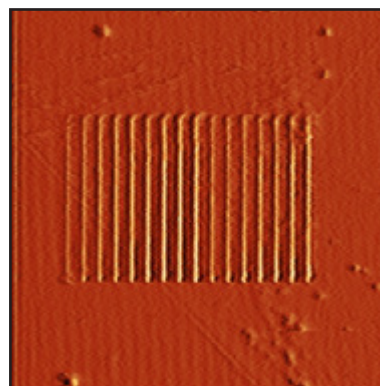
Modes Installation and Training is a one day session that occurs at the end of the initial AFM Installation and Training. First, the AFM specialist installs the mode, and next the specialist provides training on the modes operation. Images and measurements are made on standard samples during modes training sessions.



AFM image, Magnetic Read/  
Write Head 40 X 40  $\mu$



Topography image



At left, 25 x 25  $\mu$  image of lines made in PMMA surface. Each line is 1  $\mu$  apart. Force of the probe on the surface was varied on each of the lines.